

PRIME DAILY

September 23, 2025



Nvidia - OpenAI \$100 Billion Deal Catapults Markets To Record Highs

U.S. stocks rallied to record closing highs for the third consecutive session on Monday, with technology shares leading the advance. The S&P 500, Nasdaq, and Dow Jones all reached new peaks, driven primarily by mega-cap technology gains.

Nvidia surged 3.9% after announcing a \$100 billion investment in OpenAI and a partnership to supply data centre chips, fuelling optimism about AI prospects.

Apple also gained amid expectations for strong iPhone demand. The rally extended to global markets, with Wall Street's advance lifting international stocks to fresh highs.

Pfizer gained after acquiring obesity drug developer Metsera, marking its re-entry into the fast-growing weight management sector.

Gold broke new records above \$3,750 per ounce as investors sought safety amid expectations for Federal Reserve rate cuts and ongoing geopolitical risks.

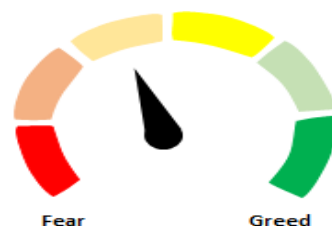
India's largest carmaker, Maruti Suzuki, recorded 80,000 customer enquiries and estimates nearly 30,000 deliveries, while Hyundai achieved wholesale volumes of 11,000 units on Monday—a day that coincided with both the first day of Navratri and the implementation of reduced GST rates.

The Nifty fell for the second consecutive session yesterday, declining 124 points or 0.49% to close at 25,202. From the recent swing high of 25448, Nifty witnessed a fall of almost 300 points. This marks a sharp correction from the recent high of 25,448.

The previous swing high support of 25153 was tested during yesterday's trading session, followed by a minor recovery towards the end.

A decisive close below 25,150 could pave the way for a further decline towards the next support at 25,040 and 24,980. On the upside, the level of 25,350 is now poised to act as an immediate resistance.

Indian markets are poised to open subdued in today's trade on weak sentiments in IT sector and persistent foreign selling.



Global Equity Indices

	Close	Abs. Change	% Change
Indian Indices			
Sensex	82,160	-466.3 ▼	-0.56%
Nifty	25,202	-124.7 ▼	-0.49%
Midcap	58,700	-394.8 ▼	-0.67%
Small cap	18,289	-215.6 ▼	-1.17%
US Indices			
Dow Jones	46,382	66.3 ▲	0.14%
S&P 500	6,694	29.4 ▲	0.44%
Nasdaq	22,789	157.5 ▲	0.70%
European Indices			
FTSE	9,227	10.0 ▲	0.11%
DAX	23,527	-112.4 ▼	-0.48%
CAC	7,830	-23.5 ▼	-0.30%
Asian Indices			
Shanghai	3,794	-25.9 ▼	-0.68%
Hang Seng	26,143	-402.4 ▼	-1.52%
Nikkei	45,494	447.9 ▲	0.99%

Indices Futures

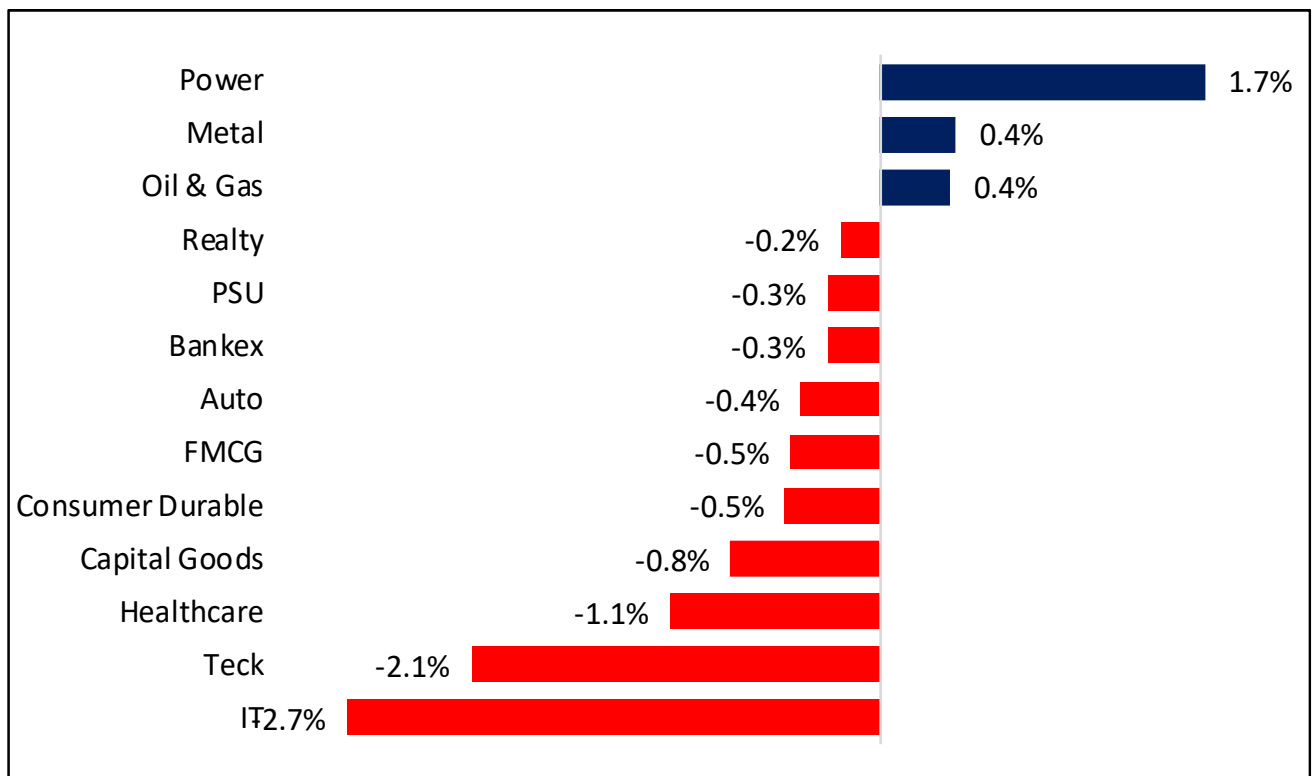
	Close	Abs. Change	% Change
IFSC Nifty			
IFSC Nifty	25,261	-44.0 ▼	-0.17%
US Indices			
Dow Jones	46,736	12.0 ▲	0.03%
S&P 500	6,752	-1.0 ▼	-0.01%
Nasdaq	25,000	-3.3 ▼	-0.01%
European Indices			
FTSE	9,298	14.5 ▲	0.16%
DAX	23,703	35.0 ▲	0.15%
Asian Indices			
Shanghai	4,435	-37.6 ▼	-0.84%
Hang Seng	26,154	-245.0 ▼	-0.93%
Nikkei	45,630	310.0 ▲	0.68%

Nifty50 Index Contributors

Top Five (Positive Contributors)		
Stock	Points	% Change
BAJFINANCE	8.2	0.03
ETERNAL	8.1	0.03
ADANIENT	6.1	0.02
AXISBANK	5.4	0.02
ULTRACEMCO	3.7	0.01

Bottom Five (Negative Contributors)		
Stock	Points	% Change
INFY	-32.4	-0.13
RELIANCE	-25.1	-0.10
TCS	-21.5	-0.08
HDFCBANK	-9.1	-0.04
LT	-8.0	-0.03

BSE Sectoral Leaders & Laggards

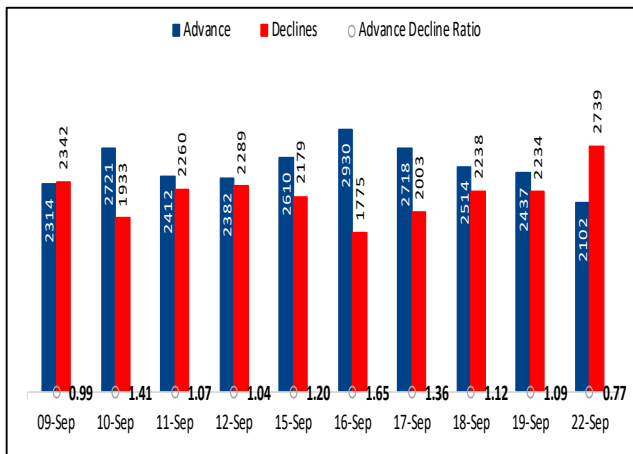


Nifty50 Index Top Pops & Drops

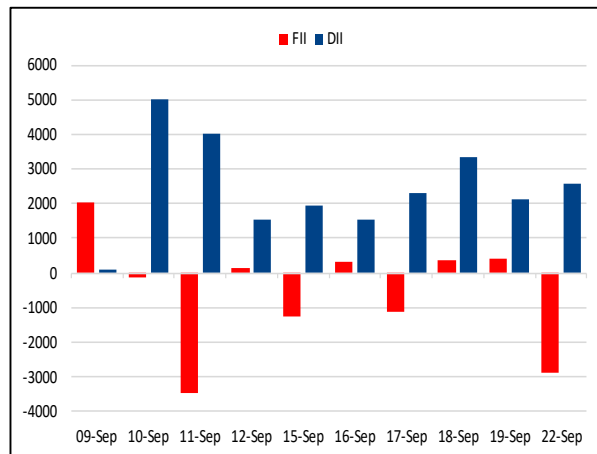
Nifty50 Top Five Gainers			
Symbol	LTP	% Change	Volume
ADANIENT	2629.5	4.18	7,022,985
ETERNAL	341.9	1.57	28,626,249
BAJFINANCE	1006.5	1.42	4,250,045
ADANIPORTS	1444.2	1.15	5,490,489
ULTRACEMCO	12650.0	1.14	499,548

Nifty50 Top Five Losers			
Symbol	LTP	% Change	Volume
TECHM	1505.4	-3.11	5,723,501
TCS	3073.8	-3.01	3,634,901
INFY	1499.5	-2.64	15,655,204
WIPRO	250.3	-2.17	15,784,007
CIPLA	1542.2	-2.13	1,257,495

BSE Advance & Declines



Institutional Activities



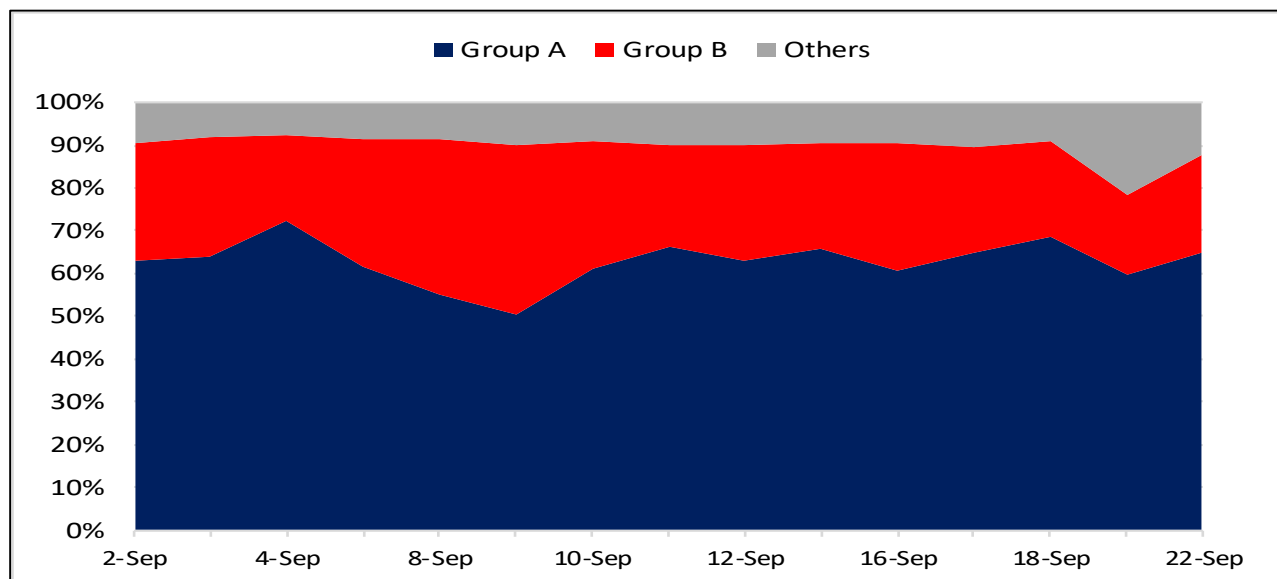
52 Week High Stocks

	22-Sep-25	19-Sep-25
BSE Universe	264	199
BSE Group A Stocks Hitting 52 Week High		
Stocks	Price	52 Week High
AVANTEL	189.8	194.4
MTARTECH	1805.9	1887.2
POLYCAB	7659.9	7711.3
CANBK	118.9	119.7
GRASIM	2855.4	2911.8




52 Week Low Stocks

	22-Sep-25	19-Sep-25
BSE Universe	80	72
BSE Group A Stocks Hitting 52 Week Low		
Stocks	Price	52 Week Low
ROUTE	841.5	840.2
PRAJIND	382.0	381.0
UBL	1,776.6	1,770.0

BSE Cash Market Turnover Participant-wise



News Highly Sensitive to Stock Price

Impact	Stock	News
	JBM Auto	<p>The company's subsidiary, JBM Electric Vehicles, entered into a strategic partnership with Al Habtoor Motors, UAE. Under this partnership, Al Habtoor Motors will be the exclusive importer and distributor of JBM's electric buses in the UAE.</p> <p>The company has one of the world's largest dedicated integrated manufacturing facilities in India with a capacity to manufacture 20,000 buses annually.</p>
	KEC International	<p>KEC International has secured new orders worth Rs 3,243 crore for transmission and distribution projects in the United Arab Emirates and the United States. With these orders, its year-to-date (YTD) order intake stands at Rs 11,700 crore.</p>
	Dr. Reddy's Labs	<p>Dr. Reddy's Laboratories Ltd. announced that the European Medicines Agency's (EMA) Committee for Medicinal Products for Human Use (CHMP) has adopted a positive opinion recommending marketing authorisation for AVT03, a biosimilar of Prolia (denosumab) and Xgeva (denosumab) in European markets. As part of the established approval process, this will now be reviewed by the European Commission (EC), following which a decision will be made on the grant of marketing authorisation in the European Economic Area (EEA).</p>

Stock	News
Hexaware	Hexaware has been reducing its dependency on H1B filings in the last few years. As a matter of fact, the Company has not made any fresh applications under the H-1B cap in April 2025. Given this, we do not anticipate any material financial or operational impact arising from the aforesaid regulatory changes.
Hyundai Motor	Hyundai Motor India has recorded 11,000 dealer billings on the first day of the nine-day Navaratri festival, marking its best single-day performance in the past five years. Looking ahead, the company anticipates sustained festive demand.
Maruti Suzuki India	The company has delivered close to 30,000 cars and received 80,000 enquiries on the first day of Navratri.
Alkem Laboratories	<p>The company announced the launch of Pertuza injection 420mg/14mL, a pertuzumab biosimilar, in India for the treatment of HER2-positive breast cancer.</p> <p>Alkem's Pertuza is an affordable, indigenously-developed and manufactured biosimilar of pertuzumab. In the pivotal phase 3 clinical trial, Alkem's pertuzumab biosimilar, developed by its biotech subsidiary, demonstrated equivalence in efficacy, safety, and immunogenicity to the reference product of the innovator.</p>
Amber Enterprises	The company has raised Rs 1,000 crore via the allotment of 12.58 lakh equity shares to qualified institutional buyers, including Nomura India Investment Fund, Invesco India, HDFC Life Insurance, Allianz Global Investors Fund, and HDFC Mutual Fund, at Rs 7,950 per share.
Shilpa Medicare	<p>Shilpa Medicare Limited has received the Initial Authorization from European Medicine Agency (EMA), recommending the grant of the final Marketing Authorization for Rivaroxaban 10 mg, 15 mg, and 20 mg Orodispersible Films. This application, submitted as a hybrid application via the EMA's Centralized Procedure, is a generic version of the innovator product Xarelto, from Bayer AG, which is available as oral tablets. Shilpa's product is bioequivalent to the reference product Xarelto and is the only Rivaroxaban in Orodispersible Films (ODF) form.</p> <p>The total Europe market for oral Rivaroxaban formulations is about US\$ 2.5 billion.</p>
Glenmark Pharma	Glenmark Pharmaceuticals' board to meet on September 26 to mull interim dividend for FY26.

Stock	News
Birla Corp	The Government of Telangana has declared RCCPL, a wholly owned material subsidiary of the company, as the preferred bidder in the auction of the Guda-Rampur limestone and manganese block.
Brigade Enterprises	The company has signed a Joint Development Agreement to develop a residential project in South Bengaluru. The project will span 7.5 acres with a gross development value (GDV) of approximately Rs 1,200 crore.
RVNL	RVNL has emerged as the lowest bidder for a project worth Rs 145.3 crore from Southern Railway. The project involves the design, supply, erection, testing, and commissioning of traction sub-stations in the Salem division of Southern Railway.
Emkay Global	Kirti Doshi, through his family-controlled entity, Antique Securities, has acquired over 21% stake and invested Rs 179.6 crore in the company through allotment of warrants at Rs 239.5 per warrant. While existing promoters Mr. Karwa and Mr. Kacholia would invest Rs 29.9 crore and Rs 18 crore in the warrants allotment.
Suraj Estates	The real estate developer has announced the launch of a residential tower, Suraj Park View 1, in Dadar (West), Mumbai, with an estimated gross development value of Rs 250 crore and a saleable carpet area of 0.53 lakh square feet.
JK Lakshmi Cement	JK Lakshmi Cement has commissioned an additional grinding unit with a capacity of 13.50 lakh tonnes per annum at Surat and completed the de-bottlenecking of its cement mills at Jaykaypuram, Sirohi. With this, the total cement capacity of the company has increased from 16.5 MTPA to 18 MTPA.
Him Teknoforge	Company has completed the execution of a Technical Collaboration Agreement with JIUXIN Precision Tooling Corp. and YIYOU Machinery Co., Ltd. (Authorized Representative of JIUXIN Precision Tooling Corp.), both entities incorporated in the Republic of China. It will have assistance from YIYOU Machinery Co., Ltd. in selecting suitable presses and equipment, developing optimized forging solutions, and supplying cost-effective dies, tools, and tooling solutions on mutually agreed commercial terms.
NTPC Green Ltd	Part capacity of 9.9 MW out of the total installed capacity of 92.4 MW Wind Project located in Bhuj, Gujarat has commenced operations. With the addition of this capacity, total installed capacity of the NGEL Group will increase to 7382.475 MW.

Stock	News
KFin Tech	Private equity firm General Atlantic may sell a 10-15% stake in KFin Technologies through block deals at a 5-8% discount. From Q3FY24 to Q1FY26, General Atlantic sold a total of 26% in the company and currently holds a 22.9% stake.
Castrol India	Castrol India has announced the launch of the Castrol All-in-One Helmet Cleaner, marking an expansion of its Auto Care business. The product is designed for Indian two-wheeler riders, for whom helmet hygiene is often overlooked. Faced with hot and dusty conditions, most riders use water and household detergents-a solution which is often inconvenient and less effective for cleaning helmets.
AU Small Finance Bank and Zaggie Prepaid	AU Small Finance Bank (AU SFB) announced a strategic partnership with Zaggie Prepaid Ocean Services Limited, India's leading spend management company. The alliance aims to launch co-branded retail credit and prepaid cards program, equipped with a unique Third-Party Application Provider (TPAP) integration and a personalized recommendation engine. The new retail credit card is designed to give customers more value through smart spending tips, easy-toearn rewards and seamless, tech-enabled experiences, making everyday spending more rewarding and effortless.

Key Events

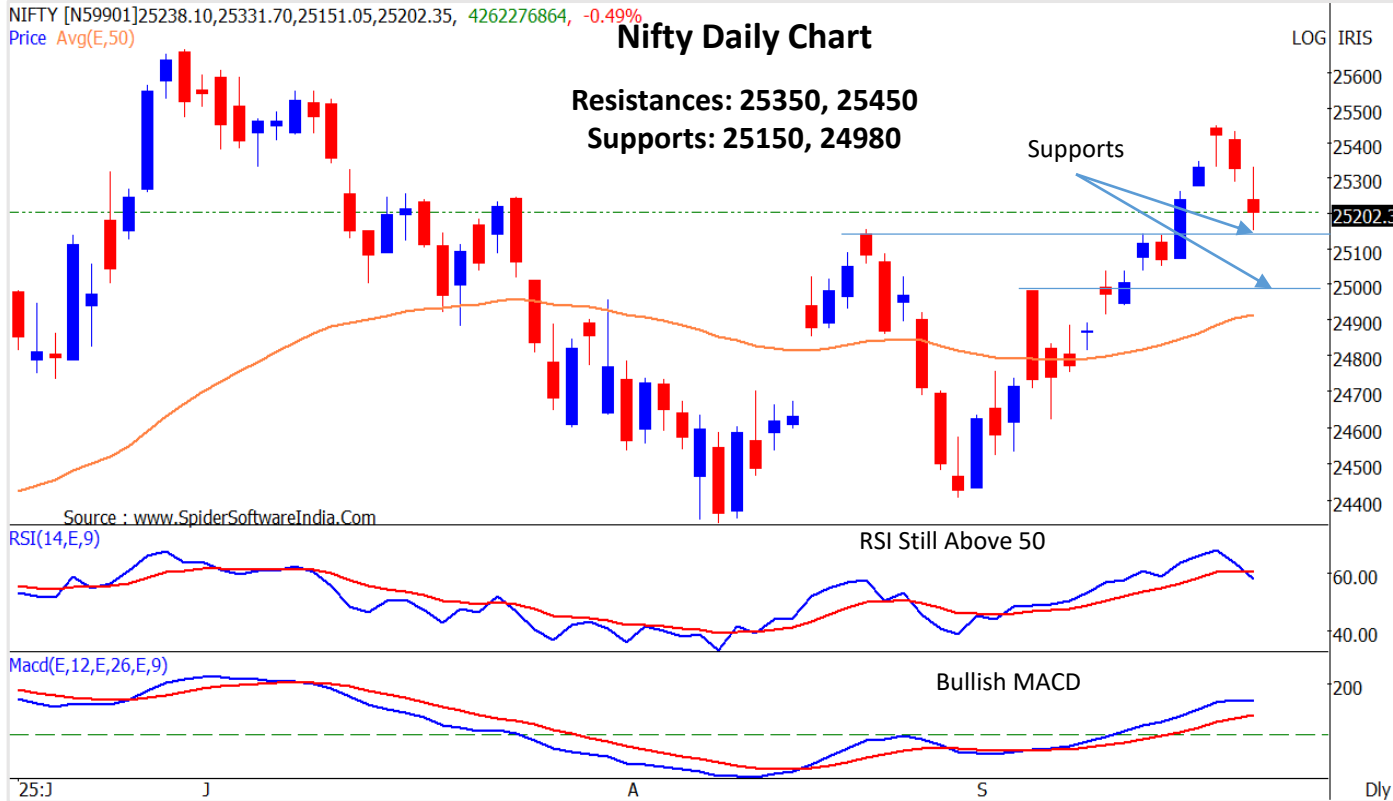
China Leaves Key Interest Rates Unchanged

The People's Bank of China left its benchmark interest rates unchanged for the fourth straight month despite key indicators suggesting economic slowdown. The PBoC kept its one-year loan prime rate unchanged at 3.0 percent. Similarly, the five-year LPR, the benchmark for mortgage rates, was retained at 3.50 percent. The decision came in line with expectations. The bank had reduced its both LPRs by quarter points in October 2024 and 10 basis points each in May.

Australia business activity growth slows in Sept as tariffs hit exports - PMI

Australia's business activity growth slowed in September, dragged down by weaker new orders and renewed pressure on exports, a private survey showed on Tuesday. The S&P Global Flash Composite Purchasing Managers' Index (PMI) fell to 52.1 in September from 55.5 in August, staying above the 50 mark that separates growth from contraction for a 12th straight month. The services activity index slowed to 52.0 from 55.8 in the previous month, while the manufacturing PMI declined to 51.6 from 53.0 as output growth also moderated.

Nifty : Strong Supports Seen at 25150 & 24980; Resistance Seen at 25350



BankNifty: Down But Not Out; Utilise Dips To Accumulate Longs

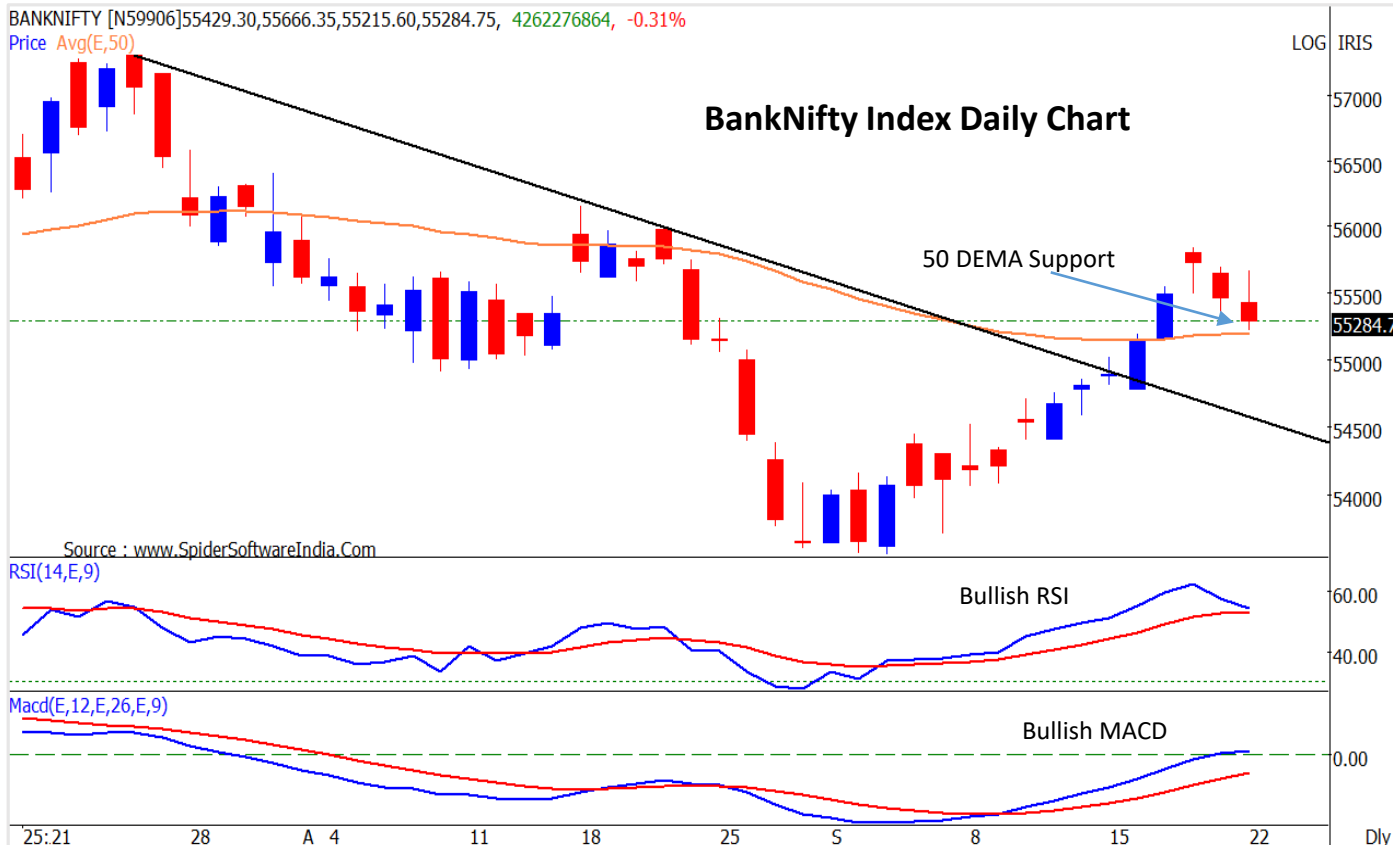


Chart With Interesting Observation

India's Banking System Liquidity Surplus Plunges To Six-month Low

- India's banking liquidity has recently experienced a shift from a surplus to a deficit. The banking system's liquidity surplus dropped to 58 billion rupees on September 22, which is the lowest level since late March.
- A decline in India's banking liquidity surplus, as seen on September 21, is a normal and temporary occurrence often caused by large tax payments. When companies and individuals pay their income tax and Goods and Services Tax (GST), a significant amount of money is transferred from commercial banks to the government's account with the Reserve Bank of India (RBI), which temporarily drains cash from the banking system.
- A decrease in the banking system's liquidity directly influences market interest rates. When there's a shortage of money, banks have to compete for funds, which can drive up short-term borrowing costs

India Banking Liquidity



Source: Bloomberg, HSL Prime Research

F&O Highlights

SHORT BUILD UP WAS SEEN IN THE NIFTY FUTURES

Create shorts with the SL of 25400 levels.

- Nifty fell for the second straight session with a fall of 124 points or 0.49%, to close at 25202. From the recent swing high of 25448, Nifty witnessed a fall of almost 300 points. This marks a sharp correction of nearly 300 points from the recent weekly swing high of 25,448.
- Short Build-Up was seen in the Nifty Futures where Open Interest rose by 0.75% with Nifty falling by 0.49%.
- Long Unwinding was seen in the Bank Nifty Futures where Open Interest fell by 2.97% with Bank Nifty falling by 0.31%.
- Nifty Open Interest Put Call ratio fell to 0.72 levels from 0.94 levels. PCR was near oversold territory.
- Amongst the Nifty options (23-Sep Expiry), Call writing is seen at 25400-25500 levels, indicating Nifty is likely to find strong resistance in the vicinity of 25400-25500 levels. On the lower side, an immediate support is placed in the vicinity of 25100-25200 levels where we have seen Put writing.
- Short covering was seen by FII's' in the Index Futures segment where they net bought worth 475 cr with their Open Interest going down by 1371 contracts.

Index	Expected Trend	Prev. Close	Buy/Sell	Stop Loss	Target
NIFTY FUT	DOWN	25277.70	SELL AROUND 25300	25400	25150
BANK NIFTY FUT	DOWN	55471.80	SELL AROUND 55600	55800	55150

Nifty50 Snapshot			
	22-Sept-25	19-Sept-25	% Chg.
Nifty Spot	25202.35	25327.05	-0.49
Nifty Futures	25277.70	25411.20	-0.53
Premium/ (Discount)	75.35	84.15	N.A.
Open Interest (OI)	1.79	1.78	0.75
Nifty PCR	0.72	0.94	-23.02

Bank Nifty Snapshot			
	22-Sept-25	19-Sept-25	% Chg.
Bank Nifty Spot	55284.75	55458.85	-0.31
Bank Nifty Futures	55471.80	55654.40	-0.33
Premium/ (Discount)	187.05	195.55	N.A.
Open Interest (OI)	0.23	0.24	-2.97
Bank Nifty PCR	0.97	1.03	-5.97

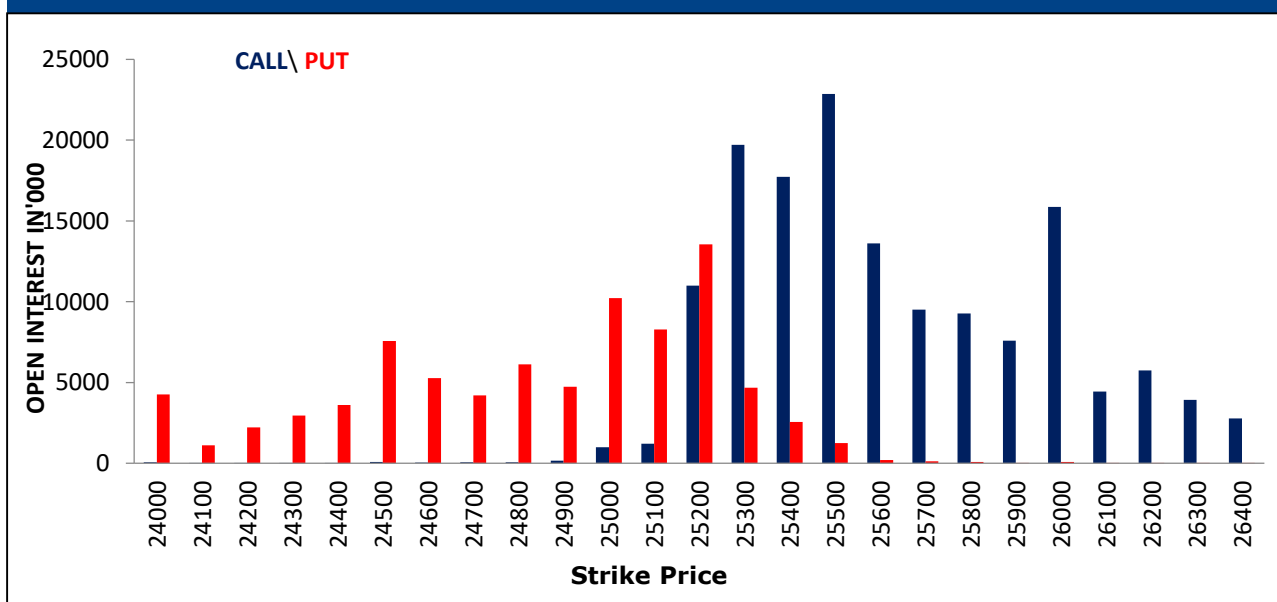
Nifty Options Highest OI (Weekly)			
CALL		PUT	
Strike Price	Open Interest (Contracts)	Strike Price	Open Interest (Contracts)
25500	304766	25200	180542

FII Activity on 22 Sept 2025

	BUY		SELL		NET	OPEN INTEREST	
	Contracts	Value (Rs Cr)	Contracts	Value (Rs Cr)	(Rs Cr)	Contracts	Value (Rs Cr)
Index Futures	14354	2730	11835	2255	475	196366	37229
Nifty Futures	10391	1974	8520	1622	352	145334	27572
Bank Nifty Fut.	2641	514	2219	433	82	27150	5278
Index Options	8240669	1563233	8291020	1572774	-9541	2248713	425941
Nifty Options	7910385	1500022	7952757	1508024	-8002	1929883	364782
Bank Nifty Opt.	239871	46715	247900	48249	-1534	274975	53207
Stock Futures	307231	21879	320266	22507	-628	5651629	399819
Stock Options	526535	38279	523160	38034	245	449123	31743

FII's Open Interest (Contracts)

Date	Index Futures	Nifty Futures	Bank Nifty Futures	Index Options	Nifty Options	Bank Nifty Options	Stock Futures	Stock Options
22-Sep-25	196366	145334	27150	2248713	1929883	274975	5651629	449123
19-Sep-25	197737	144917	28160	2018410	1713541	262704	5619036	455008
Net Contracts	-1371	417	-1010	230303	216342	12271	32593	-5885

Nifty Weekly (23 – Sept) Option Open Interest Distribution


Top Gainers OI Wise		
Company	Future OI (%)	Price (%)
KFINTECH	41	-5
RBLBANK	31	0
MUTHOOTFIN	17	4
MAZDOCK	13	0
BLUESTARCO	12	2

Top Losers OI Wise		
Company	Future OI (%)	Price (%)
HUDCO	-16	5
ADANIENT	-7	4
DABUR	-6	-3
TATACHEM	-4	-2
SAMMAANCAP	-4	-1

Top Gainers Price Wise		
Company	Future OI (%)	Price (%)
ADANIGREEN	4	12
ADANIENSOL	1	7
HUDCO	-16	5
ADANIENT	-7	4
MUTHOOTFIN	17	4

Top Losers Price Wise		
Company	Future OI (%)	Price (%)
KFINTECH	41	-5
MPHASIS	9	-5
LTIM	10	-5
COFORGE	7	-4
PERSISTENT	11	-4

Long Buildup		
Company	Future OI (%)	Price (%)
MUTHOOTFIN	17	3.8
BLUESTARCO	12	1.7
CHOLAFIN	8	2.5
HEROMOTOCO	5	0.4
ADANIGREEN	4	11.8

Short Buildup		
Company	Future OI (%)	Price (%)
KFINTECH	41	-4.9
RBLBANK	31	-0.5
MAZDOCK	13	-0.3
PERSISTENT	11	-4.3
PPLPHARMA	11	-2.7

Long Unwinding		
Company	Future OI (%)	Price (%)
DABUR	-6	-2.5
TATACHEM	-4	-2.0
SAMMAANCAP	-4	-1.4
SUNPHARMA	-3	-0.7
CAMS	-3	-2.1

Short Covering		
Company	Future OI (%)	Price (%)
HUDCO	-16	4.8
ADANIENT	-7	4.2
BHEL	-3	1.0
AXISBANK	-3	0.7
UNITDSPR	-3	0.9

Securities In Ban For Trade – 23.09.2025

No.	Company Name
1.	HFCL
2.	RBLBANK
3.	SAMMAANCAP

Economic Calendar

Tuesday	Wednesday	Thursday	Friday	Monday
23 Sept	24 Sept	25 Sept	26 Sept	29 Sept
Japan: Holiday India, EU, UK, US: Flash PMI US: Current Account, Existing Home Sales, Rich. Fed. Mfg. Index	Japan: Flash PMI US: MBA Mortgage, New Homes Sales, Building permits	US: GDP, Pers. Cons., Durable goods, Wholesale Invt., Intial & Conti. Jobless Claims	India: IIP US: Personal Income & Spending, Core PCE, Uni. Mich. Of Sentiment	EU: Consumer Conf. US: Pending Home sales, Dallas Fed. Mfg. Activity

Open Derivatives Trading Calls

NO	RECO DT	RECO	COMPANY NAME	BUY RANGE	CMP	SL	TARGET	UPSIDE %	VALID TILL
1	23-SEP-25	BUY	NIFTY 23RD SEP 25300 PUT OPTION	81.45	90.0	58	125	39.0	26-SEP-25
2	18-SEP-25	BUY	MANKIND SEP FUT	2640.40-2557	2,598.7	2,551.0	2,776.0	6.8	2-OCT-25
3	19-SEP-25	SELL	ICICI BANK SEP FUT	1408.30-1420	1,406.7	1,430.0	1,375.0	2.3	3-OCT-25

Open Short-Term MTF Calls

NO.	RECO DT.	RECO	COMPANY NAME	BUY RANGE	CMP	Lower Band	SL	TARGET	UPSIDE %	VALID TILL
1	5-SEP-25	BUY	AMRUTANJAN	753-761	759.4	725.4	712.4	807	6.3	30-SEP-25
2	8-SEP-25	BUY	HAVELLS INDIA	1592-1601	1,581.3	1,575.0	1,560.0	1657	4.8	29-SEP-25
3	12-SEP-25	BUY	NSLNISP	46-47	46.6	44.8	43.8	49.4	6.0	29-SEP-25

Open Positional MTF Calls

NO.	RECO DT.	RECO	COMPANY NAME	BUY RANGE	CMP	SL	TARGET 1	TARGET 2	UPSIDE %	VALID TILL
1	18-AUG-25	BUY	INFRA BEES	942-937.80	950.3	900.0	985.0	1015	7	17-OCT-25
2	19-AUG-25	BUY	SUPREME INDS	4496-4586	4,371.9	4190.0	4860.0	4960	13	3-OCT-25
3	20-AUG-25	BUY	CHAMBAL FERTILIZERS	560-571	539.8	515.0	615.0	640	19	19-OCT-25
4	4-SEP-25	BUY	FLAIR WRITING	322-332	315.9	298.0	354.0	369	17	3-NOV-25
5	4-SEP-25	BUY	DABUR INDIA	543-562	522.1	509.0	587.0	615	18	3-NOV-25
6	10-SEP-25	BUY	MIDSMALL	48.78-49	49.4	46.8	51.3	53	7	9-NOV-25
7	10-SEP-25	BUY	TATA TECH	716-708.20	702.3	667.0	765.0	805	15	25-OCT-25
8	15-SEP-25	BUY	FINOLEX INDS	222-219.53	216.1	202.0	242.0	260	20	14-NOV-25
9	16-SEP-25	BUY	AADHAR HOUSING FINANCE	531-538	527.6	491.0	578.0	606	15	15-NOV-25
10	16-SEP-25	BUY	PHOENIX	1612-1632	1,638.3	1510.0	1727.0	1775	8	31-OCT-25
11	17-SEP-25	BUY	REDTAPE*	146-144.17	154.9	144.2	159.0	170.0	10	16-NOV-25

*= 1st Target Achieved

NSE 200 SUPPORT & RESISTANCE

SYMBOL	CLOSE	R2	R1	PIVOT	S1	S2	5 DMA	20 DMA	% Delivery	Trend
ABB	5362.8	5500.7	5431.7	5386.4	5317.4	5272.1	5394.1	5202.2	57.4	Bullish
ABCAPITAL	288.2	296.7	292.4	289.5	285.3	282.4	288.4	284.7	42.2	Bullish
ABFRL	93.5	97.0	95.2	93.2	91.5	89.4	90.5	86.1	42.1	Bullish
ACC	1882.1	1936.3	1909.2	1889.6	1862.5	1842.9	1868.3	1839.8	37.7	Bullish
AMBUJACEM	590.3	610.4	600.3	590.8	580.7	571.2	581.9	571.3	50.3	Bullish
ADANIPOWER	170.3	185.6	177.9	162.6	155.0	139.7	138.4	127.3	23.8	Bullish
ADANIENSOL	937.4	1007.4	972.4	922.9	887.9	838.5	863.0	805.8	15.4	Bullish
ADANIGREEN	1152.2	1263.6	1207.9	1121.9	1066.2	980.2	1025.8	965.4	14.0	Bullish
ADANIENT	2629.5	2740.4	2685.0	2603.5	2548.1	2466.6	2471.4	2349.8	26.0	Bullish
ADANIPORTS	1444.2	1480.3	1462.3	1443.6	1425.6	1406.9	1419.8	1366.8	32.8	Bullish
ASHOKLEY	139.4	142.8	141.1	140.1	138.4	137.3	138.1	133.2	56.0	Bullish
ALKEM	5495.0	5599.0	5547.0	5507.0	5455.0	5415.0	5498.3	5390.7	89.0	Bullish
APLAPOLLO	1679.3	1708.2	1693.8	1683.0	1668.6	1657.8	1690.8	1670.3	60.3	Bullish
APOLLOHOSP	7739.0	7900.7	7819.8	7715.7	7634.8	7530.7	7827.3	7801.2	56.4	Bearish
ASIANPAINT	2482.7	2515.5	2499.1	2486.6	2470.2	2457.7	2483.5	2521.4	68.0	Bearish
APOLLOTYRE	486.4	495.1	490.8	486.1	481.7	477.0	484.3	477.3	54.8	Bullish
AUROPHARMA	1117.4	1135.1	1126.3	1118.1	1109.3	1101.1	1110.6	1066.0	59.8	Bullish
ASTRAL	1438.4	1471.5	1455.0	1445.0	1428.5	1418.5	1457.3	1433.1	57.7	Bullish
ATGL	780.8	867.6	824.2	738.3	694.8	608.9	650.4	613.9	16.1	Bullish
AUBANK	706.1	726.0	716.0	709.9	700.0	693.9	712.9	714.1	51.8	Bearish
AXISBANK	1144.4	1157.5	1150.9	1141.1	1134.5	1124.7	1132.1	1081.6	76.8	Bullish
BAJFINANCE	1006.5	1024.0	1015.3	1002.1	993.4	980.2	1001.2	946.5	57.9	Bullish
BAJAJHFL	113.2	115.6	114.4	113.8	112.6	111.9	114.8	113.0	63.7	Bullish
BANDHANBNK	163.2	169.7	166.5	164.6	161.4	159.5	164.8	164.4	45.0	Bearish
BDL	1627.7	1672.5	1650.1	1631.6	1609.2	1590.7	1619.8	1512.3	43.1	Bullish
BHARTIARTL	1956.2	1977.4	1966.8	1955.4	1944.8	1933.4	1948.1	1909.3	54.3	Bullish
BHARTIHEXA	1690.4	1725.6	1708.0	1693.0	1675.4	1660.4	1715.7	1753.8	69.2	Bearish
BEL	406.4	413.8	410.1	407.7	404.0	401.7	408.1	384.9	52.9	Bullish
BHEL	239.6	245.5	242.6	239.5	236.5	233.5	235.6	221.4	33.2	Bullish
BHARATFORG	1256.0	1282.2	1269.1	1260.7	1247.6	1239.2	1265.8	1187.2	47.3	Bullish
BIOCON	362.2	376.1	369.1	364.0	357.0	351.9	362.9	360.3	62.8	Bullish
BAJAJ-AUTO	9054.5	9305.2	9179.8	9069.7	8944.3	8834.2	9051.5	9024.4	35.7	Bullish
BAJAJFINSV	2069.5	2091.0	2080.2	2071.3	2060.5	2051.6	2068.7	2010.8	51.3	Bullish
BAJAJHLDNG	13279.0	13557.0	13418.0	13280.0	13141.0	13003.0	13428.0	13081.5	39.4	Bullish
BANKBARODA	251.1	256.6	253.9	251.9	249.2	247.3	247.7	239.0	51.3	Bullish
BANKINDIA	120.5	122.5	121.5	120.7	119.7	118.9	119.4	115.3	41.8	Bullish
MAHABANK	57.3	58.3	57.8	57.2	56.7	56.2	56.8	54.1	49.0	Bullish
BOSCHLTD	39570.0	40323.3	39946.7	39673.3	39296.7	39023.3	39788.0	40270.5	56.9	Bearish
BPCL	325.4	336.6	331.0	326.7	321.1	316.9	324.5	317.2	58.9	Bullish
BRITANNIA	6056.5	6146.2	6101.3	6063.2	6018.3	5980.2	6105.3	6020.5	70.1	Bullish
BSE	2156.2	2213.4	2184.8	2167.4	2138.8	2121.4	2189.2	2220.6	47.9	Bearish
CANBK	118.9	121.1	120.0	118.6	117.5	116.2	116.3	110.0	45.4	Bullish
CONCOR	550.2	564.8	557.5	553.4	546.0	541.9	558.3	546.3	58.8	Bullish
CGPOWER	770.2	789.1	779.6	774.3	764.9	759.6	783.7	745.5	50.2	Bullish
CHOLAFIN	1630.0	1677.9	1654.0	1620.2	1596.3	1562.5	1592.8	1506.8	64.1	Bullish
CIPLA	1542.2	1598.3	1570.3	1555.1	1527.1	1511.9	1563.0	1568.6	53.0	Bearish
COLPAL	2344.8	2372.0	2358.4	2344.2	2330.6	2316.4	2350.4	2362.3	59.9	Bearish
COALINDIA	394.7	398.6	396.7	395.0	393.1	391.4	395.6	388.0	59.0	Bullish
COCHINSHIP	1922.9	2006.8	1964.9	1937.9	1896.0	1869.0	1888.6	1729.5	25.0	Bullish
COFORGE	1716.9	1766.3	1741.6	1721.9	1697.2	1677.5	1781.6	1744.6	50.4	Bearish

NSE 200 SUPPORT & RESISTANCE

SYMBOL	CLOSE	R2	R1	PIVOT	S1	S2	5 DMA	20 DMA	% Delivery	Trend
DABUR	522.1	544.4	533.2	525.6	514.5	506.9	532.9	535.7	73.8	Bearish
DIVISLAB	6092.5	6244.8	6168.7	6124.8	6048.7	6004.8	6111.1	6096.9	65.1	Bearish
DIXON	18082.0	18408.7	18245.3	18151.7	17988.3	17894.7	18162.0	17725.0	43.7	Bullish
DLF	773.8	793.9	783.8	777.4	767.3	760.9	781.6	762.9	37.0	Bullish
DMART	4671.2	4839.9	4755.6	4705.4	4621.1	4570.9	4724.1	4713.8	46.7	Bearish
DRREDDY	1301.4	1332.7	1317.0	1305.3	1289.6	1277.9	1313.5	1285.9	63.3	Bullish
EICHERMOT	6946.0	7039.3	6992.7	6958.8	6912.2	6878.3	6932.4	6600.3	52.6	Bullish
ESCORTS	3656.8	3748.3	3702.5	3671.8	3626.0	3595.3	3694.5	3658.9	42.0	Bearish
ETERNAL	341.9	348.0	344.9	340.8	337.7	333.6	334.4	325.8	51.7	Bullish
EXIDEIND	403.9	420.8	412.3	407.7	399.2	394.6	416.1	413.4	47.4	Bearish
FEDERALBNK	195.0	200.0	197.5	196.0	193.5	192.0	197.3	194.2	68.2	Bullish
GAIL	181.0	183.6	182.3	181.1	179.7	178.5	181.5	176.9	57.0	Bullish
GODREJCP	1232.2	1260.1	1246.2	1234.9	1221.0	1209.7	1236.5	1249.7	67.6	Bearish
GMRAIRPORT	91.2	93.7	92.4	91.6	90.3	89.5	92.0	88.4	54.1	Bullish
GLENMARK	2017.8	2139.7	2078.7	2042.5	1981.5	1945.3	2066.2	2032.5	43.7	Bearish
GODREJPROP	2103.7	2178.6	2141.1	2117.0	2079.5	2055.4	2095.8	2016.3	35.3	Bullish
GRASIM	2854.1	2933.5	2893.8	2871.3	2831.6	2809.1	2863.8	2812.7	52.6	Bullish
HAVELLS	1581.3	1607.9	1594.6	1586.3	1573.0	1564.7	1594.9	1573.7	54.0	Bullish
HCLTECH	1439.9	1468.9	1454.4	1434.7	1420.2	1400.5	1473.1	1461.3	59.3	Bearish
HDFCAMC	5827.5	5942.5	5885.0	5847.5	5790.0	5752.5	5824.3	5708.9	54.0	Bullish
HDFCBANK	964.2	975.0	969.6	965.8	960.4	956.5	968.3	964.0	56.9	Bullish
HDFCLIFE	787.8	802.8	795.3	789.4	781.9	776.0	779.4	774.3	45.3	Bullish
HEROMOTOCO	5429.5	5541.8	5485.7	5442.8	5386.7	5343.8	5374.7	5295.9	55.5	Bullish
HAL	4808.7	4992.6	4900.7	4849.3	4757.4	4706.0	4862.4	4579.1	42.4	Bullish
HINDALCO	745.7	757.5	751.6	746.6	740.7	735.6	749.0	735.9	56.7	Bullish
HINDPETRO	412.8	420.9	416.8	413.3	409.3	405.8	408.4	393.5	52.8	Bullish
HUDCO	240.0	248.4	244.2	236.1	231.9	223.9	228.2	217.5	37.4	Bullish
HINDUNILVR	2572.2	2600.2	2586.2	2573.2	2559.2	2546.2	2573.8	2624.6	66.2	Bearish
HYUNDAI	2721.7	2953.2	2837.5	2774.2	2658.5	2595.2	2701.2	2551.5	37.6	Bullish
HINDZINC	459.3	471.6	465.4	460.5	454.3	449.4	457.8	443.2	44.3	Bullish
ICICIBANK	1401.5	1415.6	1408.5	1402.9	1395.8	1390.2	1413.2	1408.6	62.3	Bearish
ICICIGI	1886.3	1916.4	1901.3	1876.7	1861.6	1837.0	1884.5	1864.9	61.2	Bullish
IDEA	8.4	8.8	8.6	8.5	8.3	8.2	8.1	7.3	29.1	Bullish
IDFCFIRSTB	70.9	72.6	71.8	71.3	70.4	70.0	71.6	71.1	56.0	Bearish
IGL	211.6	218.1	214.8	212.7	209.4	207.3	214.6	213.0	40.1	Bearish
INDHOTEL	769.4	780.2	774.8	771.6	766.2	762.9	777.2	774.2	56.4	Bearish
INDUSINDBK	734.3	753.6	743.9	738.7	729.0	723.8	739.1	748.5	49.3	Bearish
INDIANB	704.6	712.4	708.5	704.3	700.4	696.2	700.8	679.4	44.6	Bullish
INDIGO	5747.5	5819.8	5783.7	5732.8	5696.7	5645.8	5723.2	5733.6	64.9	Bearish
INDUSTOWER	356.0	366.2	361.1	357.7	352.6	349.1	355.8	346.0	52.9	Bullish
INFY	1499.5	1531.4	1515.5	1498.7	1482.8	1466.0	1522.8	1502.2	63.4	Bearish
NAUKRI	1417.7	1463.8	1440.7	1403.0	1379.9	1342.2	1381.2	1370.0	60.9	Bullish
IOC	148.3	150.1	149.2	148.2	147.3	146.4	147.0	142.1	56.8	Bullish
ICICIPRULI	609.5	621.5	615.5	609.3	603.3	597.0	604.2	605.0	49.6	Bearish
IRB	43.5	44.2	43.8	43.6	43.2	42.9	43.7	43.1	52.6	Bullish
IRCTC	727.1	741.7	734.4	729.7	722.4	717.6	731.5	717.7	54.7	Bullish
IREDA	159.1	165.3	162.2	160.2	157.1	155.2	156.5	148.1	32.2	Bullish
IRFC	128.5	131.3	129.9	129.1	127.7	126.9	129.2	124.8	42.2	Bullish
ITC	407.0	413.0	410.0	408.0	405.0	403.1	410.3	409.2	71.3	Bearish
JIOFIN	313.9	321.4	317.6	315.2	311.4	309.0	315.9	313.1	47.8	Bullish

NSE 200 SUPPORT & RESISTANCE

SYMBOL	CLOSE	R2	R1	PIVOT	S1	S2	5 DMA	20 DMA	% Delivery	Trend
JINDALSTEL	1032.5	1072.2	1052.3	1031.8	1011.9	991.4	1042.6	1018.4	48.0	Bullish
JSWSTEEL	1117.0	1133.7	1125.3	1118.5	1110.1	1103.3	1117.4	1082.9	50.3	Bullish
JSWENERGY	543.0	554.0	548.5	543.9	538.4	533.8	540.3	518.2	38.0	Bullish
JUBLFOOD	622.8	635.7	629.3	625.2	618.7	614.6	627.3	640.0	60.0	Bearish
KALYANKJIL	505.3	517.4	511.3	507.7	501.6	498.0	512.6	507.5	36.7	Bearish
CUMMINSIND	3990.1	4161.0	4075.6	4029.0	3943.6	3897.0	4081.6	3968.6	53.2	Bullish
KOTAKBANK	2021.7	2048.4	2035.1	2026.2	2012.9	2004.0	2035.9	1980.0	76.9	Bullish
KPITTECH	1262.4	1282.1	1272.3	1261.1	1251.3	1240.1	1278.8	1240.2	43.4	Bullish
LICHSGFIN	587.3	599.4	593.4	588.6	582.6	577.8	583.1	565.2	54.7	Bullish
LICI	904.5	924.6	914.5	903.8	893.7	883.0	891.1	878.7	51.5	Bullish
LODHA	1212.3	1238.6	1225.5	1215.8	1202.7	1193.0	1207.7	1199.1	58.5	Bullish
LUPIN	2004.4	2073.0	2038.7	2018.6	1984.3	1964.2	2037.9	1973.1	60.1	Bullish
LT	3644.5	3717.0	3680.8	3657.3	3621.1	3597.6	3671.8	3594.8	56.8	Bullish
LTF	248.1	254.5	251.3	249.0	245.8	243.5	245.2	231.7	41.1	Bullish
LTIM	5260.0	5465.7	5362.8	5277.2	5174.3	5088.7	5418.5	5269.6	37.2	Bearish
MANKIND	2594.9	2706.0	2650.5	2618.4	2562.9	2530.8	2606.8	2566.1	50.8	Bullish
MFSL	1556.7	1589.3	1573.0	1562.5	1546.2	1535.7	1555.2	1591.9	57.2	Bearish
MAXHEALTH	1171.6	1189.6	1180.6	1170.6	1161.6	1151.6	1163.4	1169.7	76.2	Bearish
MAZADOCK	2976.4	3098.3	3037.4	3000.4	2939.5	2902.5	2977.8	2788.2	24.8	Bullish
M&M	3584.8	3637.5	3611.2	3590.2	3563.9	3542.9	3612.1	3494.1	65.0	Bullish
M&MFIN	290.3	295.8	293.0	289.3	286.5	282.8	285.3	269.9	51.1	Bullish
MOTILALOFS	950.3	972.5	961.4	950.9	939.8	929.4	937.2	906.8	52.3	Bullish
MOTHERSON	110.0	111.3	110.6	109.6	108.9	107.9	109.4	100.5	55.0	Bullish
MPHASIS	2852.4	2972.7	2912.5	2864.8	2804.6	2756.9	2955.1	2897.0	34.9	Bearish
MARICO	716.9	734.9	725.9	720.1	711.1	705.4	718.5	727.1	66.7	Bearish
MRF	152850.0	157126.7	154988.3	152056.7	149918.3	146986.7	150545.0	147710.0	40.9	Bullish
MARUTI	15816.0	16086.0	15951.0	15865.0	15730.0	15644.0	15774.2	15160.5	61.4	Bullish
MUTHOOTFIN	3047.6	3141.5	3094.6	3014.9	2968.0	2888.3	2974.1	2842.9	38.8	Bullish
NATIONALUM	210.9	216.7	213.8	211.6	208.8	206.6	213.2	205.4	48.2	Bullish
NESTLEIND	1188.3	1208.4	1198.3	1191.2	1181.1	1174.0	1200.1	1194.2	61.1	Bearish
NHPC	87.7	89.3	88.5	87.8	87.0	86.4	87.7	81.8	52.4	Bullish
NMDC	76.9	78.2	77.5	76.9	76.2	75.6	76.3	73.8	53.5	Bullish
NTPC	339.2	342.3	340.8	338.8	337.3	335.3	337.3	332.3	59.4	Bullish
NTPCGREEN	103.8	105.0	104.4	103.9	103.3	102.8	104.2	103.6	55.2	Bullish
NYKAA	242.4	247.3	244.9	243.3	240.9	239.4	243.7	238.8	60.2	Bullish
OBEROIRLTY	1673.9	1723.4	1698.6	1673.0	1648.2	1622.6	1660.4	1638.9	48.0	Bullish
OFSS	9056.5	9265.8	9161.2	9010.8	8906.2	8755.8	9103.4	8723.1	23.6	Bullish
OIL	409.3	418.1	413.7	407.6	403.2	397.2	403.0	398.1	39.6	Bullish
OLAELEC	58.0	59.3	58.6	57.7	57.0	56.1	58.3	58.7	100.0	Bearish
ONGC	237.5	240.0	238.7	237.2	235.9	234.4	236.3	235.1	63.6	Bullish
PAGEIND	43405.0	44035.0	43720.0	43510.0	43195.0	42985.0	44386.0	44638.8	54.3	Bearish
PATANJALI	597.4	615.2	606.3	599.2	590.3	583.2	603.0	599.8	50.2	Bearish
PAYTM	1196.2	1228.5	1212.4	1189.8	1173.7	1151.1	1211.2	1234.1	35.0	Bearish
PRESTIGE	1617.4	1669.1	1643.3	1623.6	1597.8	1578.1	1628.9	1584.2	64.1	Bullish
PHOENIXLTD	1638.3	1669.4	1653.9	1639.4	1623.9	1609.4	1624.8	1562.2	56.1	Bullish
PIIND	3668.9	3775.5	3722.2	3691.7	3638.4	3607.9	3714.1	3730.4	61.8	Bearish
PIDILITIND	3038.0	3100.0	3069.0	3047.0	3016.0	2994.0	1527.7	1542.1	61.2	Bearish
PETRONET	275.9	281.6	278.8	276.9	274.1	272.2	278.8	275.7	60.5	Bullish
PNB	113.0	115.9	114.5	113.6	112.2	111.3	111.7	106.2	39.6	Bullish
POLICYBZR	1796.6	1838.4	1817.5	1797.5	1776.6	1756.6	1802.6	1816.6	44.3	Bearish

NSE 200 SUPPORT & RESISTANCE

SYMBOL	CLOSE	R2	R1	PIVOT	S1	S2	5 DMA	20 DMA	% Delivery	Trend
POLYCAB	7657.0	7834.3	7745.7	7625.3	7536.7	7416.3	7480.1	7262.1	48.1	Bullish
PFC	408.9	413.8	411.3	409.2	406.7	404.6	406.8	396.4	56.6	Bullish
PREMIERENE	1027.0	1058.0	1042.5	1032.5	1017.0	1007.1	1058.0	1030.3	47.8	Bearish
PERSISTENT	5271.0	5446.3	5358.7	5272.8	5185.2	5099.3	5474.1	5358.7	44.6	Bearish
POWERGRID	286.7	290.3	288.5	287.2	285.4	284.1	287.5	284.1	69.5	Bullish
RECLTD	384.0	389.2	386.6	384.6	382.0	380.0	383.6	371.0	48.4	Bullish
RELIANCE	1390.6	1419.1	1404.9	1396.4	1382.2	1373.7	1406.4	1385.5	54.8	Bullish
RVNL	358.9	372.2	365.5	361.4	354.7	350.6	360.1	335.2	27.7	Bullish
SAIL	135.5	139.6	137.5	136.2	134.1	132.8	134.1	128.5	36.8	Bullish
SBICARD	869.1	884.1	876.6	870.5	863.0	856.9	884.5	836.9	46.3	Bullish
SBILIFE	1857.7	1890.3	1874.0	1863.4	1847.1	1836.5	1828.8	1817.4	39.3	Bullish
SBIN	855.3	873.4	864.3	859.2	850.1	845.0	852.1	821.8	49.9	Bullish
SHRIRAMFIN	627.9	643.0	635.4	630.4	622.9	617.9	625.9	605.4	40.2	Bullish
SUPREMEIND	4371.9	4476.4	4424.1	4393.1	4340.8	4309.8	4472.2	4500.7	42.0	Bearish
SIEMENS	3243.5	3370.6	3307.1	3271.4	3207.9	3172.2	3304.7	3188.2	46.1	Bullish
SJVN	93.8	96.0	94.9	94.3	93.2	92.6	94.2	94.3	44.3	Bearish
SOLARINDS	14464.0	14880.0	14672.0	14536.0	14328.0	14192.0	14636.4	14235.7	42.7	Bullish
SONACOMS	420.6	443.6	432.1	425.7	414.2	407.8	432.9	442.0	61.3	Bearish
SHREECEM	29705.0	30135.0	29920.0	29785.0	29570.0	29435.0	29761.0	29846.0	75.6	Bearish
SRF	2914.0	2981.6	2947.8	2924.7	2890.9	2867.8	2937.7	2916.7	41.0	Bearish
SUZLON	59.9	61.5	60.7	60.2	59.4	58.9	59.5	57.9	42.4	Bullish
SUNPHARMA	1644.0	1668.3	1656.2	1645.7	1633.6	1623.1	1635.9	1604.7	60.8	Bullish
SWIGGY	449.6	471.3	460.4	453.5	442.6	435.7	446.1	431.9	47.7	Bullish
TATASTEEL	171.4	173.1	172.2	171.4	170.5	169.7	171.7	165.7	57.2	Bullish
TATACONSUM	1130.1	1145.8	1138.0	1128.9	1121.1	1112.0	1122.9	1094.9	60.1	Bullish
TATATECH	702.3	719.3	710.8	705.4	696.9	691.5	713.9	691.1	41.9	Bullish
TATACOMM	1652.9	1717.8	1685.3	1666.6	1634.1	1615.4	1685.6	1603.8	48.1	Bullish
TCS	3073.8	3123.8	3098.8	3081.9	3056.9	3040.0	3147.6	3111.4	54.9	Bearish
TECHM	1505.4	1546.3	1525.8	1489.6	1469.1	1432.9	1537.7	1512.6	48.5	Bearish
TATAELXSI	5607.0	5758.3	5682.7	5623.8	5548.2	5489.3	5690.6	5558.2	37.5	Bullish
TIINDIA	3350.1	3425.1	3387.6	3344.3	3306.8	3263.5	3372.2	3166.5	55.9	Bullish
TORNTPOWER	1268.6	1301.7	1285.1	1273.1	1256.5	1244.5	1269.0	1269.1	38.4	Bearish
TATAPOWER	395.3	402.3	398.8	396.4	392.9	390.5	395.1	386.1	50.7	Bullish
TRENT	5010.5	5194.2	5102.3	5046.2	4954.3	4898.2	5115.9	5269.5	56.7	Bearish
TORNTPHARM	3655.9	3709.4	3682.7	3648.2	3621.5	3587.0	3587.3	3591.7	75.5	Bearish
TITAN	3457.5	3495.2	3476.3	3458.2	3439.3	3421.2	3503.2	3595.6	66.8	Bearish
TATAMOTORS	696.3	718.2	707.2	701.0	690.1	683.9	709.5	699.2	53.3	Bearish
TVSMOTOR	3525.6	3587.3	3556.4	3538.7	3507.8	3490.1	3520.3	3443.1	52.0	Bullish
UNIONBANK	138.8	142.8	140.8	139.6	137.6	136.3	137.4	131.5	38.0	Bullish
UNITDSPR	1339.9	1372.6	1356.3	1346.6	1330.3	1320.6	1332.5	1317.7	49.2	Bullish
UPL	682.8	699.6	691.2	685.3	676.9	670.9	696.0	704.6	59.4	Bearish
ULTRACEMCO	12650.0	12796.7	12723.3	12632.7	12559.3	12468.7	12616.6	12595.6	73.7	Bullish
VBL	464.0	480.6	472.3	467.7	459.4	454.8	469.2	482.7	57.6	Bearish
VEDL	458.5	466.5	462.5	458.6	454.5	450.6	457.4	441.9	42.3	Bullish
VMM	149.0	152.7	150.9	149.6	147.7	146.5	149.3	150.2	51.2	Bearish
VOLTAS	1376.2	1432.1	1404.1	1387.1	1359.1	1342.1	1409.8	1402.3	44.2	Bearish
WAAREEENER	3454.4	3561.9	3508.1	3454.3	3400.5	3346.7	3532.8	3390.7	28.9	Bullish
WIPRO	250.3	254.3	252.3	249.8	247.8	245.2	254.3	251.1	53.5	Bearish
YESBANK	21.2	21.8	21.5	21.3	21.1	20.9	21.1	20.3	45.0	Bullish
ZYDUSLIFE	1035.7	1051.9	1043.8	1038.1	1030.0	1024.2	1037.8	1019.6	59.1	Bullish

Disclosure & Disclaimer :

HDFC Securities Limited (HSL) is a SEBI Registered Research Analyst having registration no. INH000002475.

This report has been prepared by HDFC Securities Ltd and is solely for information of the recipient only. The report must not be used as a singular basis of any investment decision. The views herein are of a general nature and do not consider the risk appetite or the particular circumstances of an individual investor; readers are requested to take professional advice before investing. "This report may have been refined using AI tools to enhance clarity and readability."

Nothing in this document should be construed as investment advice. Each recipient of this document should make such investigations as they deem necessary to arrive at an independent evaluation of an investment in securities of the companies referred to in this document (including merits and risks) and should consult their own advisors to determine merits and risks of such investment. The information and opinions contained herein have been compiled or arrived at, based upon information obtained in good faith from sources believed to be reliable. Such information has not been independently verified and no guaranty, representation of warranty, express or implied, is made as to its accuracy, completeness or correctness. All such information and opinions are subject to change without notice. Descriptions of any company or companies or their securities mentioned herein are not intended to be complete. HSL is not obliged to update this report for such changes. HSL has the right to make changes and modifications at any time.

This report is not directed to, or intended for display, downloading, printing, reproducing or for distribution to or use by, any person or entity who is a citizen or resident or located in any locality, state, country or other jurisdiction where such distribution, publication, reproduction, availability or use would be contrary to law or regulation or what would subject HSL or its affiliates to any registration or licensing requirement within such jurisdiction.

If this report is inadvertently sent or has reached any person in such country, especially, United States of America, the same should be ignored and brought to the attention of the sender. This document may not be reproduced, distributed or published in whole or in part, directly or indirectly, for any purposes or in any manner.

Foreign currencies denominated securities, wherever mentioned, are subject to exchange rate fluctuations, which could have an adverse effect on their value or price, or the income derived from them. In addition, investors in securities such as ADRs, the values of which are influenced by foreign currencies effectively assume currency risk. It should not be considered to be taken as an offer to

sell or a solicitation to buy any security.

This document is not, and should not, be construed as an offer or solicitation of an offer, to buy or sell any securities or other financial instruments. This report should not be construed as an invitation or solicitation to do business with HSL. HSL may from time to time solicit from, or perform broking, or other services for, any company mentioned in this mail and/or its attachments.

HSL and its affiliated company(ies), their directors and employees may; (a) from time to time, have a long or short position in, and buy or sell the securities of the company(ies) mentioned herein or (b) be engaged in any other transaction involving such securities and earn brokerage or other compensation or act as a market maker in the financial instruments of the company(ies) discussed herein or act as an advisor or lender/borrower to such company(ies) or may have any other potential conflict of interests with respect to any recommendation and other related information and opinions.

HSL, its directors, analysts or employees do not take any responsibility, financial or otherwise, of the losses or the damages sustained due to the investments made or any action taken on basis of this report, including but not restricted to, fluctuation in the prices of shares and bonds, changes in the currency rates, diminution in the NAVs, reduction in the dividend or income, etc.

HSL and other group companies, its directors, associates, employees may have various positions in any of the stocks, securities and financial instruments dealt in the report, or may make sell or purchase or other deals in these securities from time to time or may deal in other securities of the companies / organizations described in this report. As regards the associates of HSL please refer the website.

HSL or its associates might have managed or co-managed public offering of securities for the subject company or might have been mandated by the subject company for any other assignment in the past twelve months.

Please note that HDFC Securities has a proprietary trading desk. This desk maintains an arm's length distance with the Research team and all its activities are segregated from Research activities. The proprietary desk operates independently, potentially leading to investment decisions that may deviate from research views.

HSL or its associates might have received any compensation from the companies mentioned in the report during the period preceding twelve months from the date of this report for services in respect of managing or co-managing public offerings, corporate finance, investment banking or merchant banking, brokerage services or other advisory service in a merger or specific transaction in the normal course of business.

HSL or its analysts did not receive any compensation or other benefits from the companies mentioned in the report or third party in connection with preparation of the research report. Accordingly, neither HSL nor Research Analysts have any material conflict of interest at the time of publication of this report. Compensation of our Research Analysts is not based on any specific merchant banking, investment banking or brokerage service transactions. HSL may have issued other reports that are inconsistent with and reach different conclusion from the information presented in this report.

Research entity has not been engaged in market making activity for the subject company. Research analyst has not served as an officer, director or employee of the subject company. We have not received any compensation/benefits from the subject company or third party in connection with the Research Report.

HDFC securities Limited, I Think Techno Campus, Building - B, "Alpha", Office Floor 8, Near Kanjurmarg Station, Opp. Crompton Greaves, Kanjurmarg (East), Mumbai 400 042 Phone: (022) 3075 3400 Fax: (022) 2496 5066

Compliance Officer: Murli V Karkera Email: complianceofficer@hdfcsec.com Phone: (022) 3045 3600

For grievance redressal contact Customer Care Team Email: customercare@hdfcsec.com Phone: (022) 3901 9400

HDFC Securities Limited, SEBI Reg. No.: NSE, BSE, MSEI, MCX: INZ000186937; AMFI Reg. No. ARN: 13549; PFRDA Reg. No. POP: 11092018; IRDA Corporate Agent License No.: CA0062; SEBI Research Analyst Reg. No.: INH000002475; SEBI Investment Adviser Reg. No.: INA000011538; CIN - U67120MH2000PLC152193

Investment in securities market are subject to market risks. Read all the related documents carefully before investing.

Mutual Funds Investments are subject to market risk. Please read the offer and scheme related documents carefully before investing.

Registration granted by SEBI, membership of BASL (in case of IAs) and certification from NISM in no way guarantee performance of the intermediary or provide any assurance of returns to investors.